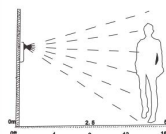


Introduction

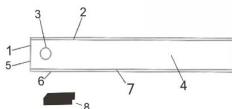
This product use low power consumption IC, lengthens the working times, Using infrared induction and light control technology, the product is beautiful, atmospheric and practical, create a warm and happy intelligent life for you.

1. Using the high quality LEDs, the lighting is soft and comfortable.
2. PIR motion sensor switch, people come to the sensor range, When people left away, it will turn off after 15s.
3. Simple installation with no screws needed, directly attached to the device with magnetic. (Note: each lamp has a fixed magnetic position, the iron piece install at the position with strongest magnetic)
4. Three working modes: OFF/ON/AUTO switch.
5. The product is suitable for cabinet, wine cabinet, bookcase, staircase, corridor, Entryway, drawer, wardrobe, bedroom.

The human body sensor lamp



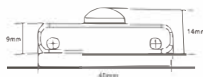
1. Switch
2. LED lamp bead
3. Induction probe
4. PC lampshade
5. Charging port
6. Built-in magnet
7. Aluminum alloy housing
8. 3M plastic iron sheet



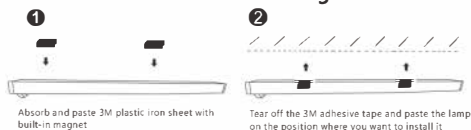
Product specification parameter

Dimension	20 CM	32 CM	40 CM
Power	1W	1.5W	2W
Current	250MA	350MA	450MA
Color	6500K		
Switch	OFF ON AUTO		

Body sensor lamp specifications



Product installation drawing



Warning

1. Do not install in a humid environment, Strong illumination, near the hot and cold air inlet and outlet. In order not to affect the sensitivity and produce the wrong action,
2. Please charge battery when light goes dim.
3. When testing the infrared sensing function, Please do so in the dark and at temperature of 5-30 degrees Celsius. Otherwise the sensitivity decreases or the sensing range shortens.
4. When the product fails during the warranty period, do not dismantle the product privately, otherwise it will not be guaranteed.